

Feces analysis report

Contact number:    Hospital address:

Report number:2601130001	Medical No.:	Test time:2026.01.13 11:41:57
Pet nickname:105	Pet Type:Feline	Pet Gender:Male
Pet Age: Year	Sample Type:Feces	Owner's name:
Color:Brown	Texture:Soft Stool	

Parameters	Result	Ref. Range	Negative	Positive
------------	--------	------------	----------	----------

01.Parasite Eggs

ALE#	0.00 piece/LPF	0.00 - 0.00 piece/LPF	-	
ANE#	3.69 piece/LPF	0.00 - 0.00 piece/LPF		+
CEE#	0.00 piece/LPF	0.00 - 0.00 piece/LPF	-	
DIP#	0.00 piece/LPF	0.00 - 0.00 piece/LPF	-	
SPI#	0.00 piece/LPF	0.00 - 0.00 piece/LPF	-	
TtE#	0.00 piece/LPF	0.00 - 0.00 piece/LPF	-	
TRE#	0.34 piece/LPF	0.00 - 0.00 piece/LPF		+

02.Intestinal Protozoa

TRI#	0.00 piece/LPF	0.00 - 0.00 piece/LPF	-
FLA#	0.00 piece/LPF	0.00 - 0.00 piece/LPF	-
COD#	0.00 piece/LPF	0.00 - 0.00 piece/LPF	-
COD0#	0.00 piece/LPF	0.00 - 0.00 piece/LPF	-
COD1#	0.00 piece/LPF	0.00 - 0.00 piece/LPF	-
COD2#	0.00 piece/LPF	0.00 - 0.00 piece/LPF	-
Tg#	0.00 piece/LPF	0.00 - 0.00 piece/LPF	-

Low	Normal	High
-----	--------	------

03.Pathogens

COS#	0.00 piece/HPF ↓	20.00 - 120.00	<div><div></div><div></div><div></div></div>
BACI#	0.48 piece/HPF ↓	80.00 - 2200.00	<div><div></div><div></div><div></div></div>
C/B	0.00 ↓	0.01 - 0.15	<div><div></div><div></div><div></div></div>
CAM#	0.00 piece/HPF	0.00 - 4.50	<div><div></div><div></div><div></div></div>
BAC#	0.00 piece/HPF	0.00 - 6.00	<div><div></div><div></div><div></div></div>
SS1#	0.00 piece/HPF	0.00 - 0.00	<div><div></div><div></div><div></div></div>
SS2#	0.00 piece/HPF	0.00 - 0.00	<div><div></div><div></div><div></div></div>
YEA#	0.00 piece/HPF	0.00 - 20.00	<div><div></div><div></div><div></div></div>

04.Cells

RBC#	0.00 piece/HPF	0.00 - 1.00	<div><div></div><div></div><div></div></div>
------	----------------	-------------	--

Feces analysis report

Contact number: Hospital address:

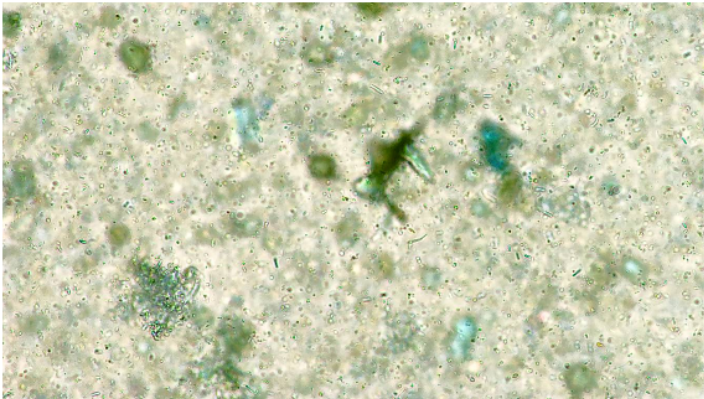
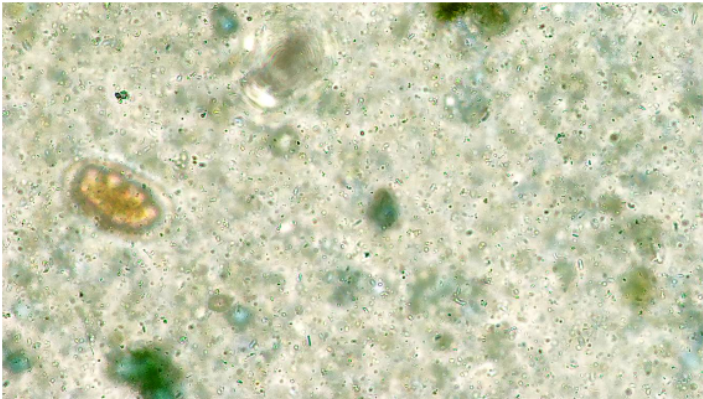
Report number:2601130001	Pet nickname:105	Pet Type:Feline
--------------------------	------------------	-----------------

Parameters	Result	Ref. Range	Low	Normal	High
WBC#	0.00 piece/HPF	0.00 - 1.00			
EPC#	0.00 piece/HPF	0.00 - 2.00			

05.Digestive Products

STA#	0.07 piece/HPF	0.00 - 2.00			
LFAT#	0.00 piece/HPF	0.00 - 0.20			
PLA#	0.00 piece/HPF	0.00 - 0.10			
AF#	0.00 piece/HPF	0.00 - 0.10			

Flora distribution graph



1.Hookworm Infection

criterion:Elevated hookworm eggs in feces indicate a hookworm infection, common in young dogs or individuals with low immunity, characterized by diarrhea, anemia, and weight loss.

2.Heavy Wing Trematode Infection

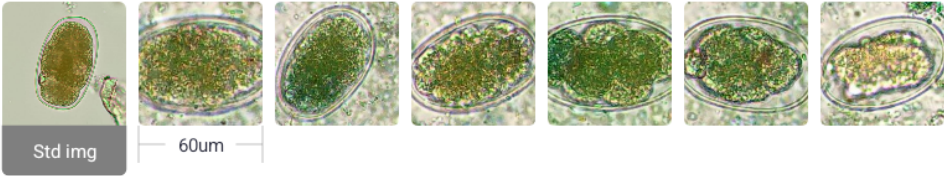
criterion:Elevated TRE# indicates heavy-winged fluke infection, common in cats and dogs after ingesting intermediate hosts, characterized by chronic diarrhea, weight loss, and intestinal inflammation.



Low Normal High

ANE# 3.69 piece/LPF (0.00 - 0.00 piece/LPF)

-Clinical indication:There is a possibility of hookworm infection  
-Basis for judgment:According to [1] , the increase in hookworm eggs is direct evidence of hookworm infection



# Feces analysis report

Contact number: Hospital address:

Report number:2601130001

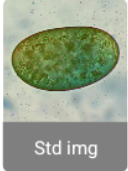
Pet nickname:105

Pet Type:Feline

## TRE# 0.34 piece/LPF (0.00 - 0.00 piece/LPF)

-Clinical indication:Suggestion of heavy wing fluke infection

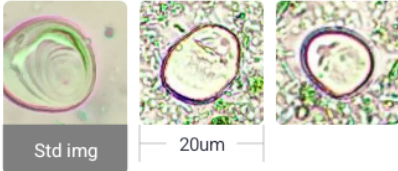
-Basis for judgment:According to the Merck Veterinary Manual and ESCCAP guidelines, an elevated TRE# is associated with the detection of Centrocestus formosanus eggs, indicating fluke infection.



## BACI# 0.48 piece/HPF (80.00 - 2200.00 piece/HPF)



## STA# 0.07 piece/HPF (0.00 - 2.00 piece/HPF)



## Possible conditions and reasoning

Light Ancylostoma Infection High

Elevation of ANE# directly corresponds to the most common manifestation

Heavy Fluke Infection High

Elevation of TRE# directly corresponds to the detection of heterophyid fluke eggs, the most probable diagnosis

[1]Peregrine,A.S. parásitos gastrointestinales de pequeños animales [M/OL]. Merck Veterinary Manual, 2024 (9).

[2]Robertson,L.J. giardiasis animal [M/OL]. Manual veterinario de Merck, 2025 (8).

[3]Comité científico europeo de parásitos animales de compañía (ESCCAP). Guía ESCCAP 06: prevención y control de protozoarios intestinales en perros y gatos [M/OL]. Comité científico europeo de parásitos de animales de compañía (ESCCAP), 2025 (3).